



INDOFINE Chemical Company, Inc.

121 Stryker Lane, Bldg. 30, Suite 1 • Hillsborough, NJ 08844 • U.S.A.

Phone: (908) 359-6778 • FAX: (908) 359-1179

website: www.indofinechemical.com

e-mail: chemical@indofinechemical.com

CERTIFICATE OF ANALYSIS

Catalog Number: 06-1408

Product Name: (+)-GALLOCATECHIN

CAS Number: [970-73-0]

Lot Number: 2010480

Chemical Formula: C₁₅H₁₄O₇

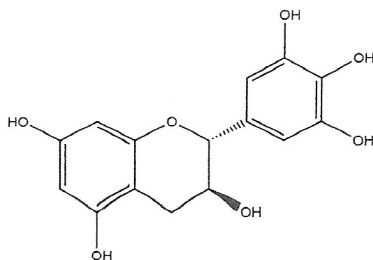
Molecular Weight: 306.27

Appearance: Off-white powder

Water Content: 2.29%

Storage: Store in a cool, dry place

Purity(HPLC): 99.77%



Prepared by:
Ramesh Mandadi
Ramesh Mandadi
Director of Operations

Reviewed and Approved by:
Sujata Moton
Sujata Moton
VP



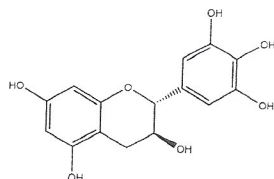
INDOFINE Chemical Company, Inc.

121 Stryker Lane, Bldg. 30, Suite 1 • Hillsborough, NJ 08844 • U.S.A.

Phone: (908) 359-6778 • FAX: (908) 359-1179

website: www.indofinechemical.com

e-mail: chemical@indofinechemical.com



HPLC ANALYSIS

Catalog No.: 06-1408

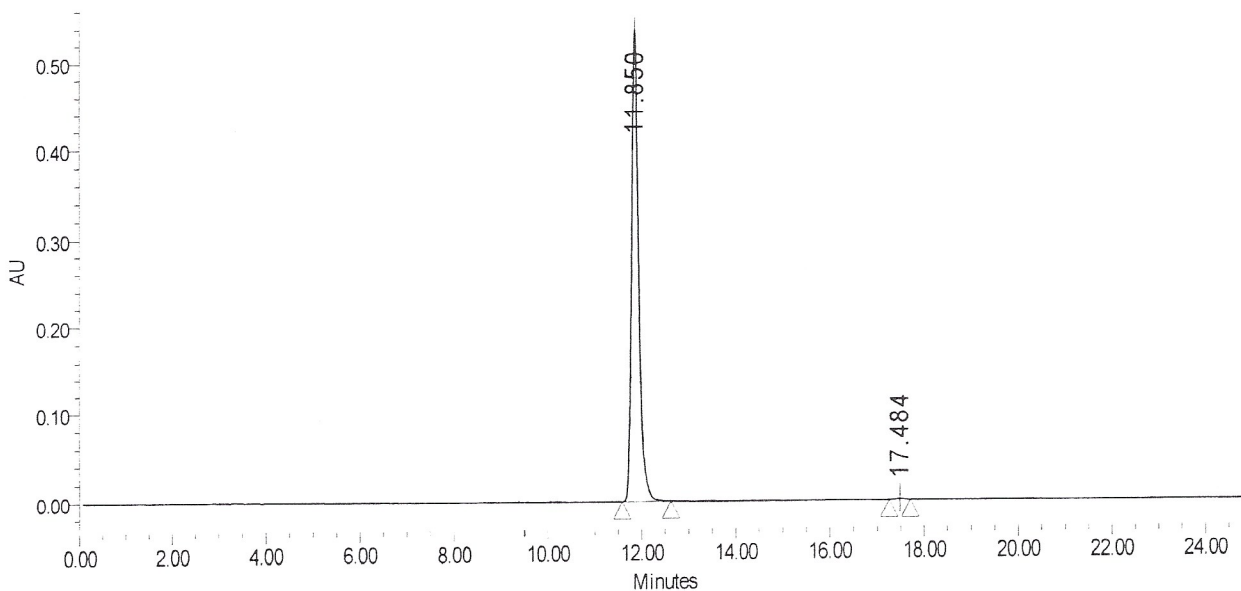
Product Name: (+)-Gallocatechin

Lot No.: 2010480

SAMPLE INFORMATION

Sample Name:	Gallocatechin	Acquired By:	prf01
Sample Type:	Unknown	Sample Set Name	
Vial:	21	Acq. Method Set:	Gallocatechin
Injection #:	1	Processing Method	sample1
Injection Volume:	10.00 ul	Channel Name:	PDA Ch1 238nm@4.8nm
Run Time:	25.0 Minutes	Proc. Chnl. Descr.:	PDA Ch1 238nm@4.8nm

Auto-Scaled Chromatogram



Peak Results

Name	RT	Area	% Area	Height (μV)	USP Plate Count	USP Resolution
1	11.850	5604435	99.77	537922	32856.42	
2	17.484	12725	0.23	1232	62403.31	20.46

Prepared by:

Ramesh Mandadi

Ramesh Mandadi

Director of Operations

Reviewed and Approved by:

Sujata Moton

Sujata Moton

VP